

■ **Walt Disney's Comics and Stories – Vol. 16 No.9  
(June 1954)**

Evaluation Date: April 2, 2026



# SUMMARY OF OBSERVATIONS

This comic retains the front cover, back cover, centerfold, and all photographed interior pages. Interior pages exhibit tan to medium-tan paper coloration with clear artwork and legible text. The most significant condition issue is at the **binding**, where **both original staples are missing**, resulting in **substantial paper loss and structural deterioration along the spine fold**. As a result, the covers and interior pages rely on residual paper integrity rather than mechanical fastening.

Despite the binding failure, the interior pages remain present and readable, and the paper retains limited flexibility as observed in the brittleness test. The observations below describe the condition of each area based strictly on what is visible in the provided photographs.

---

## FRONT COVER — OBSERVATIONS

*Walt Disney's Comics and Stories – Vol. 16 No. 9 (June 1954)*

### **Photo Condition & Quality:**

The image shows the full front cover with clear visibility of all edges, corners, and the spine area. Lighting is even, allowing inspection of surface wear and fiber loss.

### **Observations:**

The front cover displays **strong remaining color saturation**, particularly in the yellow background field and multicolored character artwork. Ink outlines remain legible, though the surface shows widespread age wear.

Along the **spine edge**, a **large open void** is visible where the staple stations were originally located. This void spans **approximately 18–25 mm vertically** at the primary opening and extends **approximately 6–10 mm inward** from the original spine fold. Within this area, multiple layers of interior paper are exposed, indicating long-term mechanical stress and loss of binding material rather than a single tear event.

Additional **edge chipping and paper loss** are visible along the spine fold above and below the main void, affecting **multiple short segments of approximately 3–7 mm each**. The paper in these areas shows jagged, uneven margins with exposed fibers.

Corner wear is present on all four corners. The **lower spine-side corner** shows rounding and partial fiber loss extending **approximately 5–8 mm** inward. Other corners show rounding of **approximately 3–6 mm**, without material loss beyond surface thinning.

No diagonal creases or folds cross the main artwork field.

**Overall Impression:**

The front cover remains present and visually legible, but **binding failure at the spine has resulted in major material loss and exposed page layers**, representing the dominant defect.

---

## BACK COVER — OBSERVATIONS

Walt Disney's Comics and Stories – Vol. 16 No. 9 (June 1954)

**Photo Condition & Quality:**

The back cover image clearly shows the full advertisement page, all edges, and corners.

**HEY KIDS! HAVE MORE FUN ON THE BEST BIKE OF THEM ALL!**

The 3-SPEED  
**Schwinn CORVETTE**

**JUST LOOK!**

- 3-Speed Gears
- Hand Brakes, front and rear
- Speedy middleweight design
- Faster rolling narrow tires
- Stainless steel fenders
- Electric headlight
- Front luggage carrier
- Schwinn Cantilever frame
- Deluxe saddle with handrail
- Sparkling opalescent colors

**EASY BUDGET TERMS**  
at most Schwinn Dealers

**TAKE A TEST RIDE!**  
Your nearby Schwinn Dealer will be glad to let you test-ride this amazing new Schwinn Corvette and tell you about many other exciting Schwinn bikes—over 65 Schwinn models in all sizes and colors for boys and girls. Schwinn Prices start at \$39.95

Your Schwinn Dealer is listed in your classified directory

**and it's made in America by Schwinn ...so you know it's the best!**

**FREE! A PRESENT FOR YOU!**  
See your favorite movie and television stars riding Schwinn bicycles in this exciting full-color folder. GET IT FREE! from your Schwinn dealer, or send in the coupon.

**ARNOLD, SCHWINN & CO. - Chicago 39, Ill.**

Arnold, Schwinn & Company  
1702 North Kildare Avenue  
Chicago 39, Illinois

Please send me at once:  
**FREE! The Full Color Schwinn Bike Folder.**

Name \_\_\_\_\_  
Address \_\_\_\_\_  
City \_\_\_\_\_ Zone \_\_\_\_\_  
State \_\_\_\_\_ Age \_\_\_\_\_

### Observations:

The back cover remains intact with no large missing sections. Edge wear is visible along the spine and bottom edges, consisting of abrasion affecting **approximately 5–15 mm intermittently**. The spine edge shows fiber fraying adjacent to the binding void but no additional large breaks beyond those seen on the front cover.

Corners show rounding of **approximately 4–7 mm**. Surface inspection reveals moderate, evenly distributed soiling consistent with age. No moisture staining or tide lines are visible.

### Overall Impression:

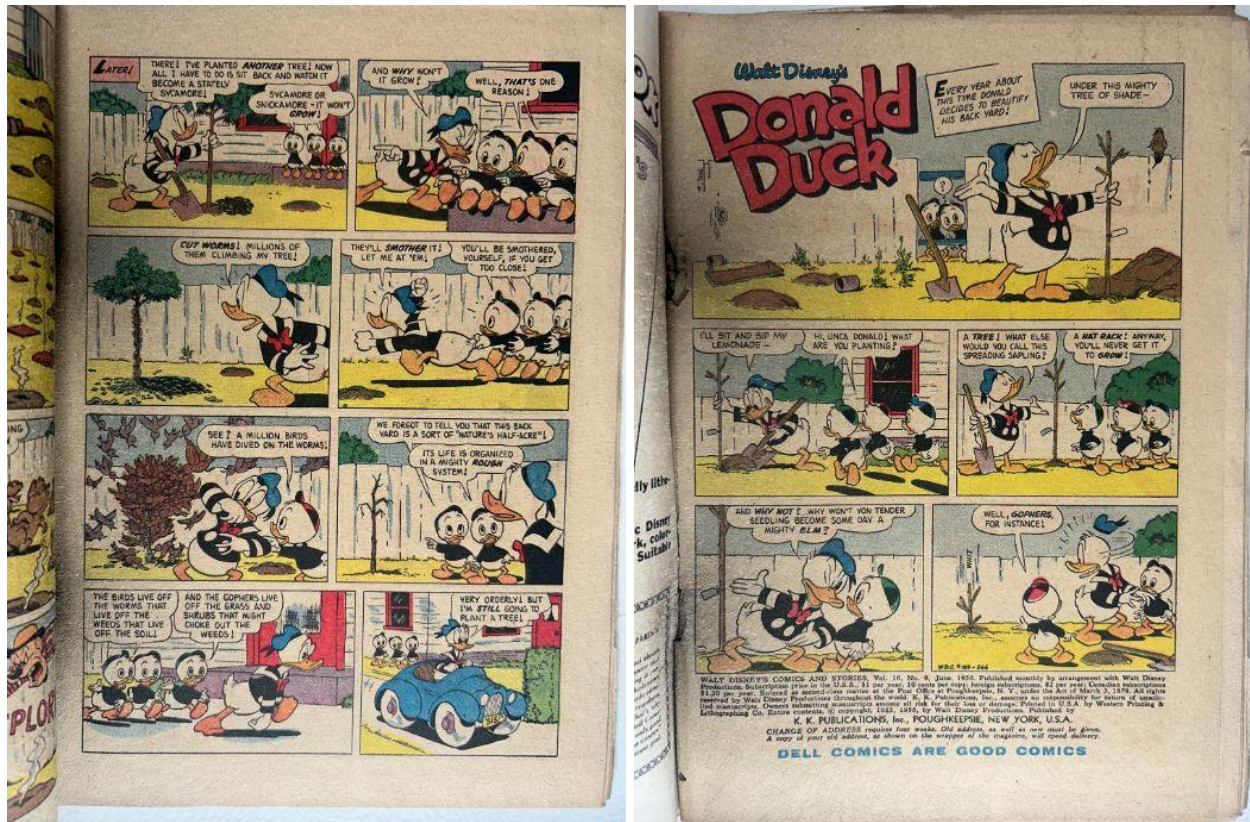
The back cover is intact but affected by **spine-related binding loss** and general handling wear.

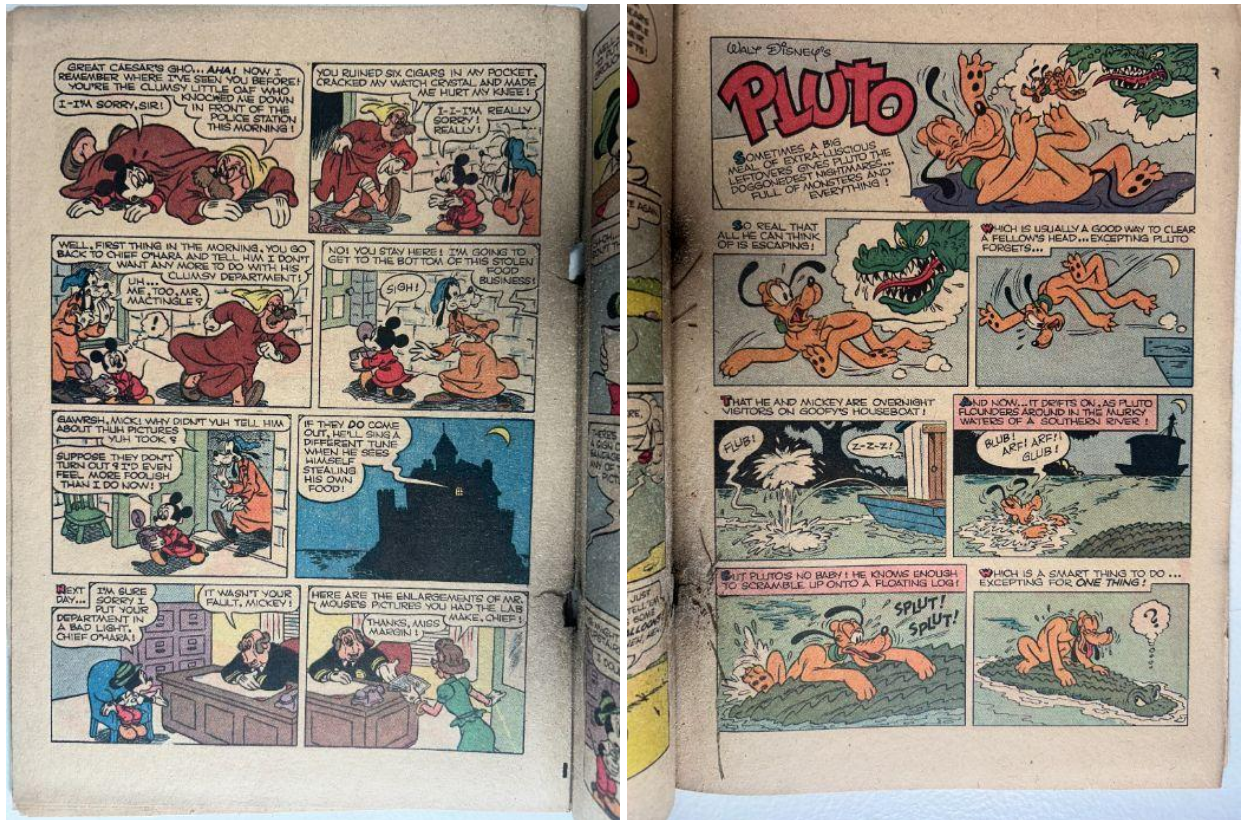
## INTERIOR PAGES — OBSERVATIONS

*Walt Disney's Comics and Stories – Vol. 16 No. 9 (June 1954)*

### Photo Condition & Quality:

Multiple interior pages are shown flat with margins, gutters, and edges visible. Artwork and paper texture are clearly resolved.





### Observations:

Interior pages exhibit **tan to medium-tan paper coloration**, darker toward the edges. Printed colors remain visible, though muted by oxidation. Linework remains clear and readable.

Along the **inner margins**, paper adjacent to the spine shows **irregular tearing and fiber loss** where the staples were once seated. These damaged zones extend **approximately 4–8 mm inward** from the original fold line on multiple pages. Some pages show partial separation along the inner margin but remain physically present in the photographed stack.

Lower outer corners of several pages show bends of **approximately 4–6 mm**. No interior writing, staining, or ink transfer is visible.

### Overall Impression:

Interior pages remain readable and present, but **binding loss has caused measurable inner-margin damage across multiple pages**.

# CENTERFOLD — OBSERVATIONS

Walt Disney's Comics and Stories – Vol. 16 No. 9 (June 1954)

## Photo Condition & Quality:

The centerfold image shows both pages and the central fold area clearly.



**Observations:**

The centerfold shows **complete absence of both staple fasteners**. The former staple locations are marked by **enlarged, irregular openings** measuring **approximately 5–9 mm in width** and **6–10 mm in vertical length**. Surrounding paper shows layered delamination and torn fibers.

The fold line between these openings shows extensive fiber separation, and the centerfold pages rely solely on adjacent paper overlap for alignment. No intact mechanical attachment is visible.

**Overall Impression:**

The centerfold is **detached from original binding hardware**, with extensive paper loss at former staple locations.

---

## SPINE — OBSERVATIONS

*Walt Disney's Comics and Stories – Vol. 16 No. 9 (June 1954)*

**Photo Condition & Quality:**

Close-range images show the spine edge with clear visibility of the binding void and layered paper exposure.

**Observations:**

The spine exhibits **major structural failure**. The absence of staples has resulted in a **continuous opening** along the spine fold measuring **approximately 20–30 mm vertically** at its widest point. Interior page layers are visibly stacked and separated.

Additional cracking and chipping extend above and below the main opening, affecting **multiple segments of 3–8 mm each**. The spine no longer functions as a continuous fold and does not provide binding support.

**Overall Impression:**

The spine shows **severe binding loss**, with complete failure of the original fastening method.

---

# UPPER STAPLE — OBSERVATIONS

*Walt Disney's Comics and Stories – Vol. 16 No. 9 (June 1954)*

## **Photo Condition & Quality:**

Macro image shows the upper former staple location.



## **Observations:**

No metal staple is present. The former staple area shows an **irregular void** with torn paper fibers extending **approximately 4–7 mm** from the original slot location. Surrounding paper exhibits delamination and edge crumbling.

## **Overall Impression:**

Upper staple is **completely missing**, with significant surrounding paper damage.

---

## LOWER STAPLE — OBSERVATIONS

*Walt Disney's Comics and Stories – Vol. 16 No.9 (June 1954)*

### **Photo Condition & Quality:**

Macro image shows the lower former staple location clearly.



### **Observations:**

No metal staple is present. The lower former staple area exhibits **more extensive paper loss** than the upper location, with an opening measuring **approximately 6–10 mm wide** and surrounding fiber disruption extending **up to ~10 mm**.

### **Overall Impression:**

Lower staple is **completely missing**, with pronounced paper deterioration at the binding point.

---

# BRITTLENESS TEST — OBSERVATIONS

*Walt Disney's Comics and Stories – Vol. 16 No. 9 (June 1954)*

## **Photo Condition & Quality:**

The image shows a page corner flexed outward with fibers visible.



## **Observations:**

The page corner flexes with noticeable stiffness. The bend forms over **approximately 20–30 mm** of arc length. No audible cracking is evident, and no visible fiber fracture or flaking is present in the photographed area.

## **Overall Impression:**

Paper exhibits **advanced oxidation with retained but limited flexibility.**